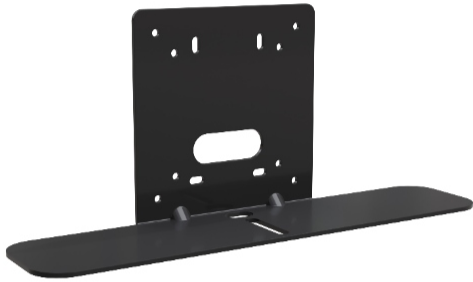


Thin Profile Wall Mount Bracket for Poly Studio E70 **SKU: 535-2000-252**



ADA-compliant thin profile wall mounting bracket for Poly Studio E70 with less than 4" protrusion from the wall with the camera attached. Easily mount to carts or monitor arms with the 75mm or 100mm VESA mounting patterns or connect to duplex electrical boxes with convenient leveling slots.

Key Features:

- ADA-compliant design
- Powder-coated heavy gauge steel construction
- 75mm and 100mm VESA mounting patterns
- Duplex electrical box mounting pattern with leveling slots

This Package Includes:

- Thin Profile Camera Mount
- 1/4-20 fastener

Specifications

Dimensions & Measurements	Depth	2.75 in (7 cm)
	Height	5.03 in (12.8 cm)
	Shipping Dimensions	12" x 10" x 10" (304.8 x 254 x 254 mm)
	Shipping Weight	4 lbs (1.8 kg)
	Width	12 in (30.5 cm)
Characteristics & Features	Application	Wall
	Color	Black
	Compatible With	Polycom
	OneLINK Compatibility	No
	Quick-Connect Compatibility	No
	TAA Compliant	Yes
	UPC	840077508098
Certifications & Warranties	Certifications	<ul style="list-style-type: none">• ADA• CE• FCC• TAA
	Warranty	3 years

Source: https://www.legrandav.com/products/mounts/camera_mount/thin-profile-wall-mount-bracket-for-poly-studio-e70/535-2000-252