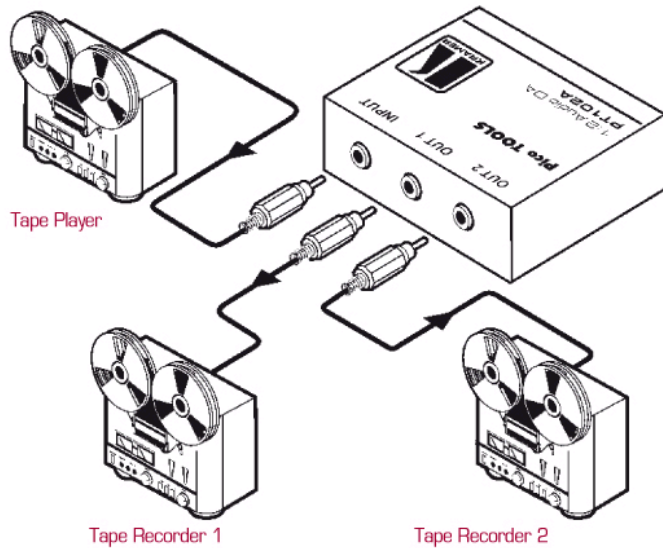




1:2 AUDIO DISTRIBUTION AMPLIFIER



The Kramer PT102A is a high performance audio distribution amplifier for unbalanced stereo signals. It will take one stereo input and distribute the signal to two identical stereo outputs.



DESCRIPTION

- Level (Gain) Controls.
- S/N Ratio - 71.6dB.
- Ultra-compact - Part of the Kramer PicoTOOLSTM family of extremely compact, high quality and cost effective solutions.

SPECIFICATIONS

INPUT:	1 audio stereo, 1Vpp/20kΩ on a 3.5 mm miniplug connector.
OUTPUTS:	2 audio stereo, 1Vpp/150Ω on 3.5 mm miniplug connectors.
MAX. AUDIO OUTPUT:	6 Vpp.
AUDIO BANDWIDTH (-3DB):	100 kHz.
S/N RATIO:	71.6dB.
CONTROL:	Gain: -50db to +18.8db, EQ.: 0 to 2.2dB, via trimmers accessible from side panel.
COUPLING:	AC.
THD+NOISE:	0.017%, 1 kHz.
POWER SOURCE:	12 VDC, 30mA.
DIMENSIONS:	6cm x 6.5cm x 2.5cm (2.36" x 2.56" x 1", W, D, H.).
WEIGHT:	0.1 kg. (0.22 lbs.) approx.
ACCESSORIES:	Power supply, mounting bracket.